

BOCCHI

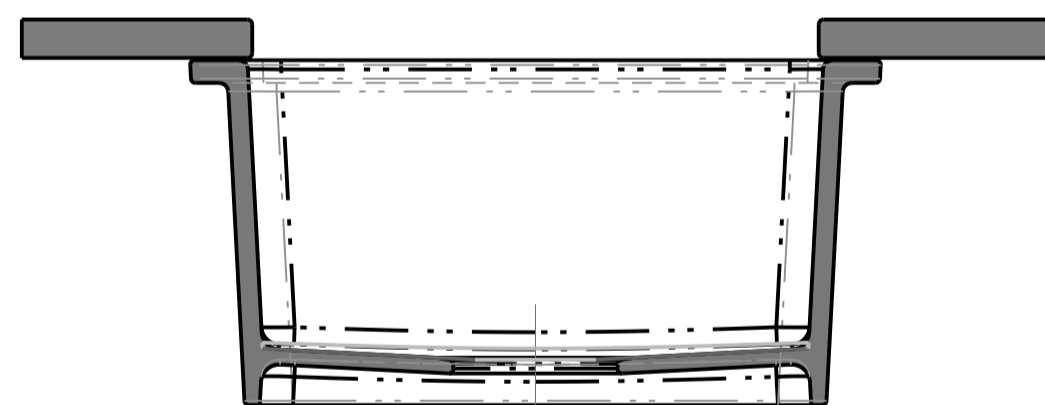
www.bocchiusa.com

Customer Service Phone: 877-565-2221

NOTE: Cutout template is provided as a guide ONLY and must be checked against actual sink to verify correct fit.

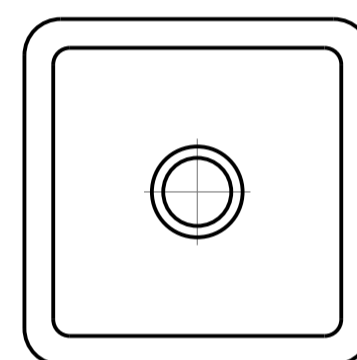
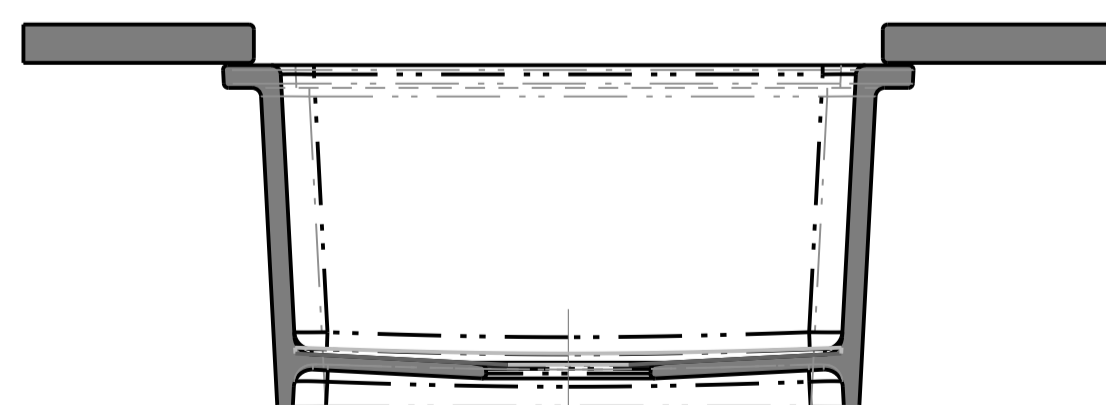
1/8" Overhang

The countertop **extends** 1/8" over the edge of the sink on all sides

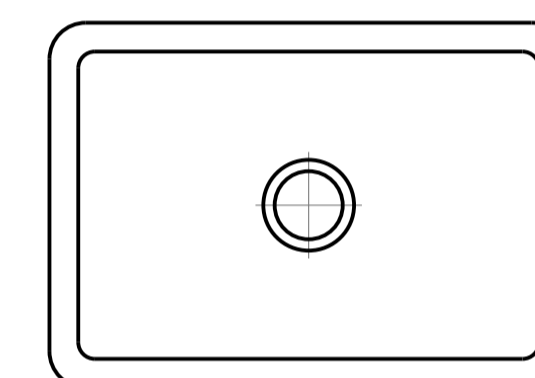


11/16" Reveal

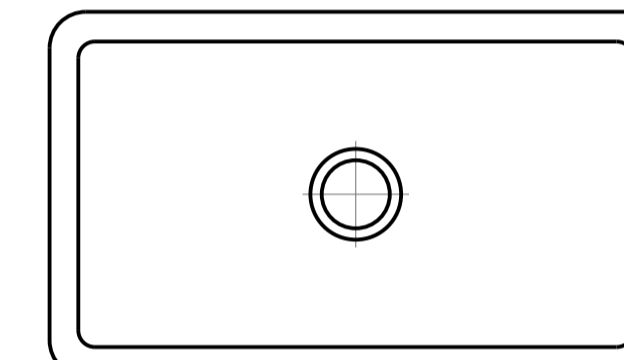
The countertop **extends** approximately 11/16" back from the edge of the sink on all sides.



1359



1360



1362

Cut along inner solid line for negative reveal 1/8"

Cut along inner solid line for negative reveal 1/8"

Cut along inner solid line for negative reveal 1/8"

Use outer edge for positive reveal 11/16"

Use outer edge for positive reveal 11/16"

Use outer edge for positive reveal 11/16"

14-3/4"
1359 Overhang

16-1/2"
1359 Reveal

23-11/16"
1360 Overhang

25-3/8"
1360 Reveal

28-11/16"
1362 Overhang

30-3/8"
1362 Reveal

17-3/8"
1362 Reveal

15-3/4"
1360/1362
Overhang

16-7/16"
1359 Reveal

14-3/4"
1359 Overhang

R3/4" TYPICAL
R1-5/8" TYPICAL